



GPM

**GLOBAL PROTECTIVE
MANAGEMENT INC**

Providing Global Security Solutions



Vilsa



The SecureAssess™ Team

GPM™ and its Mexico City based representative **Vilsa Group** offers a range of **SecureAssess™** software products and consulting services for conducting security vulnerability assessments for a diverse range of industries and facilities

SecureAssess™ software solutions are currently used to complete security assessments for General Industry, High-Rise Building, Critical Infrastructure, Transportation, Healthcare and Supply Chain environments



The SecureAssess™ Advantage

- Compliance focused
- Flexible and Customizable for any industry, facility or site
- Portable - will operate on virtually all PDAs including Palm O/S devices and Pocket PCs
- Delineates threats, risks and security vulnerabilities



The SecureAssess™ Advantage

- Facilitates the consistent, accurate collection of security information
- Easy to use by non-security trained staff
- Allows pre-assessment identification of security remedies in line with specific industry compliance standards

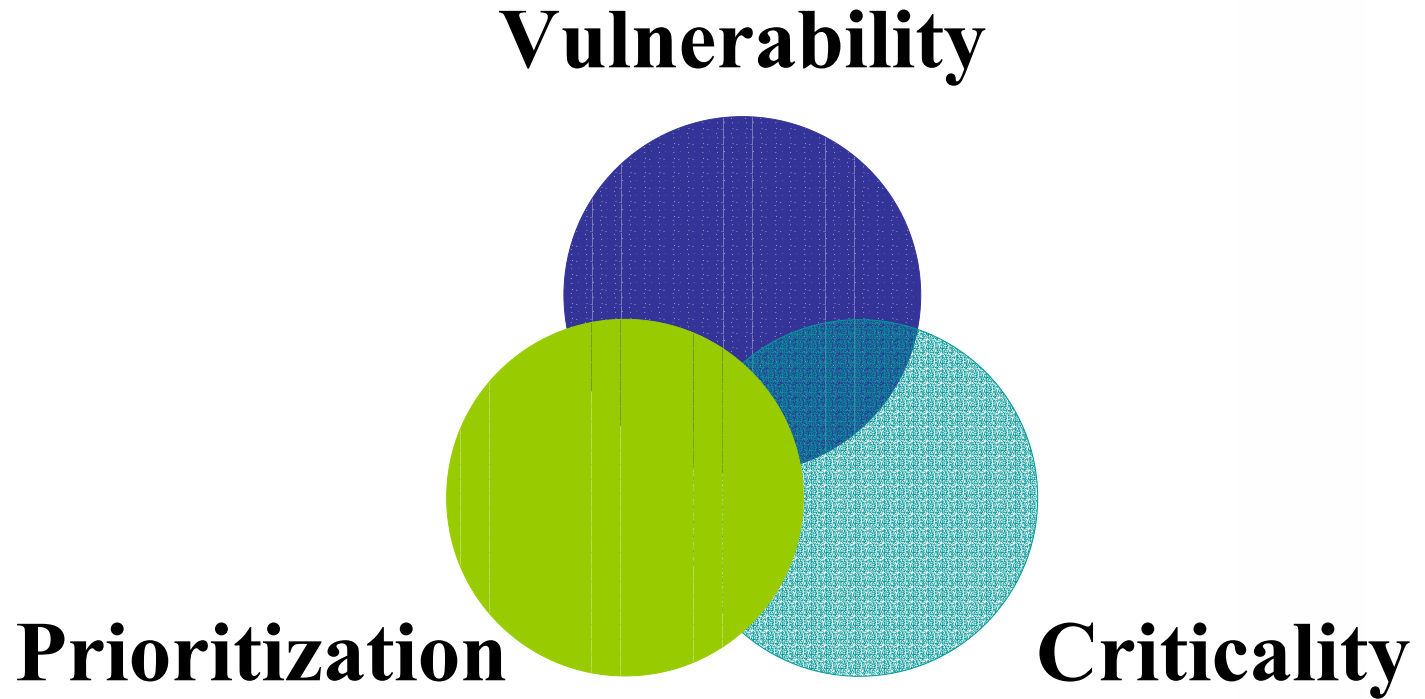
The SecureAssess™ Advantage



- Reduces individual assessment time by 50 – 75%
- Quickly generates both narrative and graphical reports
- Formalized follow-up and tracking of security recommendations and program responses
- Facilitates ongoing analysis of security trends over large numbers of facilities and geographical areas



Critical Assessment Relationships



Global Protective Management

Audit Id:

Company: Division:

Region: Department:

- Audit Questions**
- 0 - 0 - 0 Global Protective Management ("GPM") COPYRIGHT © 2003 by Global Protective Man
 - 1 - 0 - 0 SECURITY PROGRAM - ORGANIZATIONAL STRUCTURE
 - 1 - 1 - 0 General Information
 - 1 - 1 - 1 Does the organization have a dedicated security structure or function in pl
 - 1 - 1 - 2 Does the Head of Security report to the executive level?
 - 1 - 1 - 3 Are there sufficient full-time internal security resources (not including secu
 - 1 - 1 - 4 Are there formalized job descriptions for each internal security position? If
 - 1 - 1 - 5 Is there a formalized organizational chart for the security group? If so, obt
 - 1 - 1 - 6 Does the Head of Security provide Senior Management with a periodic sec
 - 1 - 1 - 7 Is the security program formally reviewed, by non-security staff, on an anr
 - 1 - 1 - 8 Is a formal security budget developed each upcoming year, and at least on
 - 1 - 1 - 9 Is the location to be assessed comprised of stand-alone building(s)/facility(
 - 1 - 1 - 10 Is there a site plan which shows the size and position of the facility(ies) re
 - 1 - 1 - 11 Are there floor plans for the individual facility(s)? If so, obtain a copy.
 - 1 - 1 - 12 Does the organization have a formalized emergency response or continge
 - 1 - 1 - 13 Has the emergency response or contingency plan been formally tested, ar
 - 1 - 2 - 0 Section 1, SubSection 2 - Enter section 1, subsection 2 description.
 - 1 - 2 - 1 Section 1, Subsection 2, Item 1 - Enter an audit definition / question.
 - 1 - 2 - 2 Section 1, Subsection 2, Item 2 - Enter an audit definition / question.

Sect: 1 Sub Sect: 1 Item: 6 Aspects:

Audit Question Maximize

Does the Head of Security provide Senior Management with a periodic security status report?

Scoring Criteria Maximize

A summary report should provide Senior Management with a synopsis of security incidents, critical issues, evolving trends, forecasts and immediate issues which may need

Possible Score: **15**

External App:

Response List: **4**

Print Blank Lines

Supplementary Files

Use Repository

- Response List**
- 0 Response List #0
 - 0 - 1 Required to support comments on the Audit.
 - 1 Response List #1
 - 1 - 1 Yes
 - 1 - 2 No
 - 1 - 3 Partially
 - 1 - 4 Under Development
 - 1 - 5 Un-Confirmed
 - 1 - 6 N/A
 - 2 Response List #2

Global Protective Management

Audit Id:

Company: Division:

Region: Department:

Cancel Update

Add Delete Exit

- Audit Questions**
- 0 - 0 - 0 Global Protective Management ("GPM") COPYRIGHT © 2003 by Global Protective Man
 - 1 - 0 - 0 SECURITY PROGRAM - ORGANIZATIONAL STRUCTURE
 - 1 - 1 - 0 General Information
 - 1 - 1 - 1 Does the organization have a dedicated security structure or function in pl
 - 1 - 1 - 2 Does the Head of Security report to the executive level?
 - 1 - 1 - 3 Are there sufficient full-time internal security resources (not including secu
 - 1 - 1 - 4 Are there formalized job descriptions for each internal security position? If
 - 1 - 1 - 5 Is there a formalized organizational chart for the security group? If so, obt
 - 1 - 1 - 6 Does the Head of Security provide Senior Management with a periodic sec
 - 1 - 1 - 7 Is the security program formally reviewed, by non-security staff, on an an
 - 1 - 1 - 8 Is a formal security budget developed each upcoming year, and at least on
 - 1 - 1 - 9 Is the location to be assessed comprised of stand-alone building(s)/facility(
 - 1 - 1 - 10 Is there a site plan which shows the size and position of the facility(ies) re
 - 1 - 1 - 11 Are there floor plans for the individual facility(s)? If so, obtain a copy.
 - 1 - 1 - 12 Does the organization have a formalized emergency response or continge
 - 1 - 1 - 13 Has the emergency response or contingency plan been formally tested, ar
 - 1 - 2 - 0 Section 1, SubSection 2 - Enter section 1, subsection 2 description.
 - 1 - 2 - 1 Section 1, Subsection 2, Item 1 - Enter an audit definition / question.
 - 1 - 2 - 2 Section 1, Subsection 2, Item 2 - Enter an audit definition / question.

Sect	Sub Sect	Item	Aspects
1	1	6	

Summary Comments

Audit Question Maximize

Does the Head of Security provide Senior Management with a periodic security status report?

Possible Score: **15**

Scoring Criteria Maximize

A summary report should provide Senior Management with a synopsis of security incidents, critical issues, evolving trends, forecasts and immediate issues which may need

External App

Response List: **4**

Print Blank Lines


Supplementary Files

Add Remove Edit File

Use Repository

- Response List**
- Response Lists
 - 0 Response List #0
 - 0 - 1 Required to support comments on the Audit.
 - 1 Response List #1
 - 1 - 1 Yes
 - 1 - 2 No
 - 1 - 3 Partially
 - 1 - 4 Under Development
 - 1 - 5 Un-Confirmed
 - 1 - 6 N/A
 - 2 Response List #2

Global Protective Management

Audit Id:  ABD Test Manufacturing Ltd / Western / Distribution & Logistics / Audit 8 Date: 2004/01/08 New Date Sync to HandHeld

Company: ABD Test Manufacturing Ltd Division: Distribution & Logistics Executive Summary

Region: Western Department: Audit & Compliance Follow Up Exit

- Audit Questions**
- 0 - 0 - 0 Global Protective Management ("GPM") COPYRIGHT © 2003 by Global Prot
 - 1 - 0 - 0 SECURITY PROGRAM - ORGANIZATIONAL STRUCTURE
 - 1 - 1 - 0 General Information
 - 1 - 1 - 1 Does the organization have a dedicated security structure or fur
 - 1 - 1 - 2 Does the Head of Security report to the executive level?
 - 1 - 1 - 3 Are there sufficient full-time internal security resources (not incl
 - 1 - 1 - 4 Are there formalized job descriptions for each internal security p
 - 1 - 1 - 5 Is there a formalized organizational chart for the security group?
 - 1 - 1 - 6 Does the Head of Security provide Senior Management with a pe
 - 1 - 1 - 7 Is the security program formally reviewed, by non-security staff
 - 1 - 1 - 8 Is a formal security budget developed each upcoming year, and
 - 1 - 1 - 9 Is the location to be assessed comprised of stand-alone building
 - 1 - 1 - 10 Is there a site plan which shows the size and position of the fac
 - 1 - 1 - 11 Are there floor plans for the individual facility(s)? If so, obtain a
 - 1 - 1 - 12 Does the organization have a formalized emergency response c
 - 1 - 1 - 13 Has the emergency response or contingency plan been formally
 - 1 - 2 - 0 Section 1, SubSection 2 - Enter section 1, subsection 2 description.
 - 1 - 2 - 1 Section 1, Subsection 2, Item 1 - Enter an audit definition / questi
 - 1 - 2 - 2 Section 1, Subsection 2, Item 2 - Enter an audit definition / questi

Audit Question

External App

Is the security program formally reviewed, by non-security staff, on an annual basis?

Possible Score: 15

Scoring Criteria Maximize

An annual review should include analysis of security workload, security incident reporting and budget allocations, etc.

Select Response

Actual Score: 0

Always

Sometimes

On an inconsistent basis


Narrative Assessment Maximize

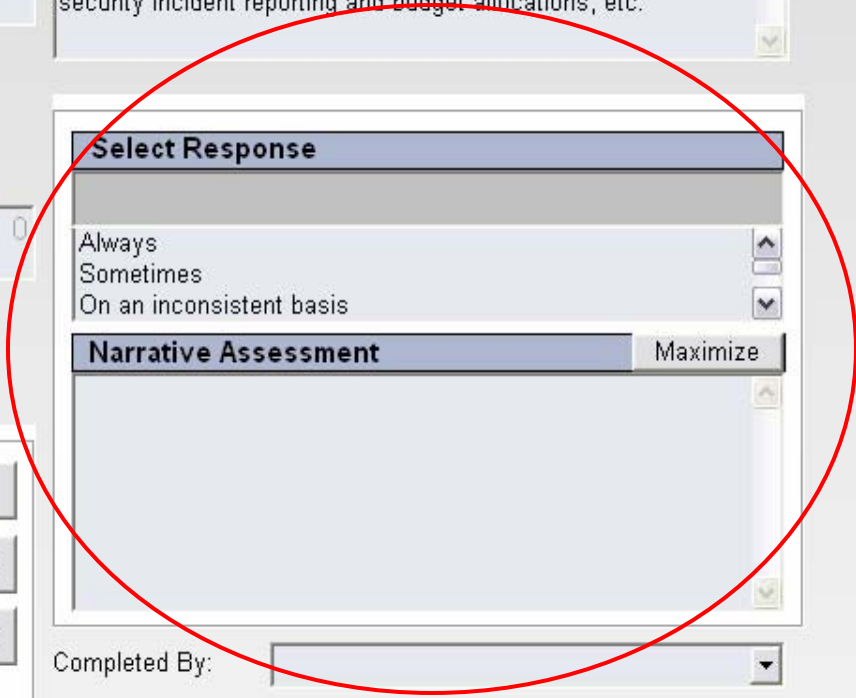
Supplementary Files



Add Remove Edit File

Use Repository

Completed By: 



Detailed Reporting

2-5-4 As required, are CCV cameras contained in appropriate environmental or tamper resistant housings? **Yes** **10.00 / 10.00**

2-5-5 Are exterior CCV cameras appropriately placed to monitor all access and egress points on the property? **Yes** **0.00 / 10.00**

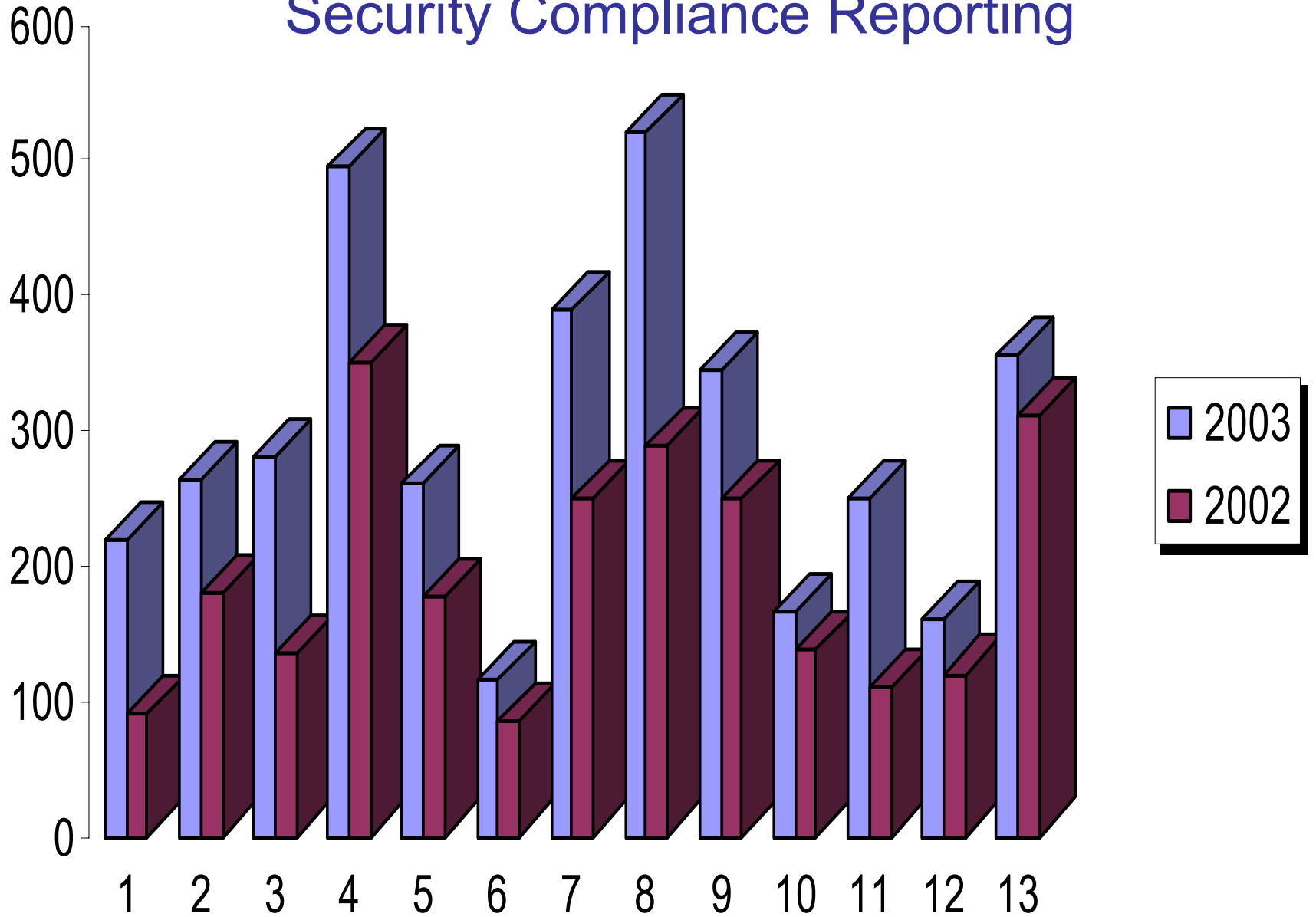
Exterior CCV provides coverage of the formal pedestrian access/egress points of the DC. However, based on the design, and number of open access points (e.g., trailer docking points and doors, as well as a large number of emergency egress doors (not currently active as entrances into the DC), it is difficult to provide for 100% monitoring of each access and egress point.

2-5-6 Can the existing CCV cameras positively identify persons and items such as vehicle license plates? **No** **0.00 / 10.00**

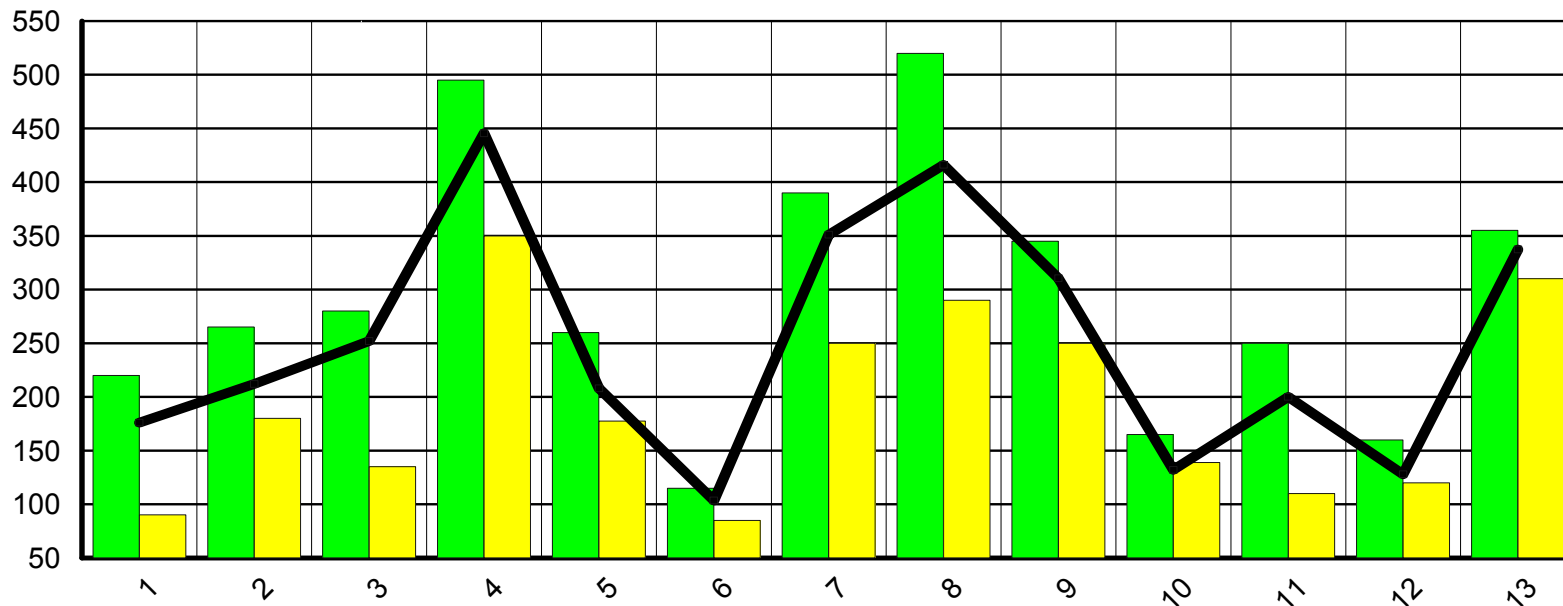
2-5-7 If color CCV cameras are used for exterior applications, has lighting been implemented which specifically supports color imaging? **No** **0.00 / 10.00**

Section Score = 255/490 = 52%

Security Compliance Reporting



Audit Summary Report



Possible Score

Actual Score

Compliance Level

	<u>Total</u>	<u>T. Compl</u>	<u>Target</u>	<u>Actual</u>	<u>A. Compl</u>
1. SECURITY PRGM	220.00	80.00%	176.00	90.25	41.02%
2. BUILDING & PROPERTY	265.00	80.00%	212.00	180.00	67.92%
3. SURFACE PARKING	280.00	90.00%	252.00	135.00	48.21%
4. ACCESS CONTROL	495.00	90.00%	445.50	350.00	70.71%



SecureAssess™ Automated Security Assessment and Evaluation System

Visit our comprehensive Website for additional information.

GPM is able to facilitate an on-line product demonstration – visit us at:

www.secureassess.com



The SecureAssess™ Team

- GPM is a British Columbia based company specializing in the development of security related software products and consulting services.

www.secureassess.com

1-866-476-6644

- Vilsa Group is a Mexico City based security technology and consulting company.

www.vilsa.com.mx

(55) 54.88.08.24 al 28